



ROWELL MARINE

BROKERAGE

MARINA

SERVICES

RETAIL



47.2' Sea Ray Sundancer 470

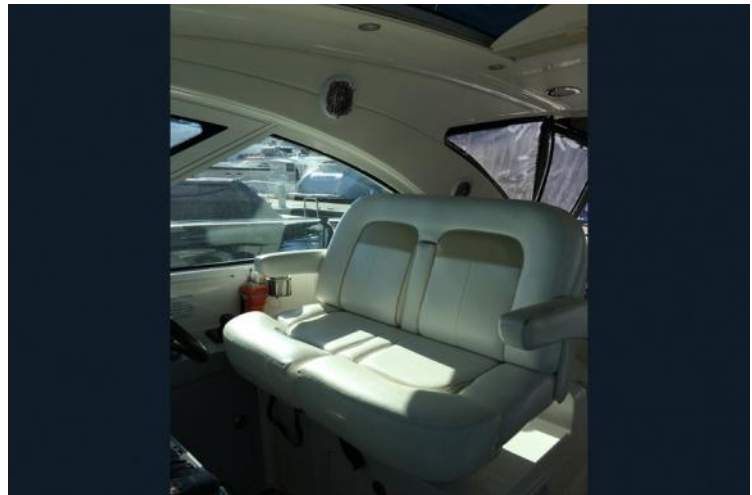
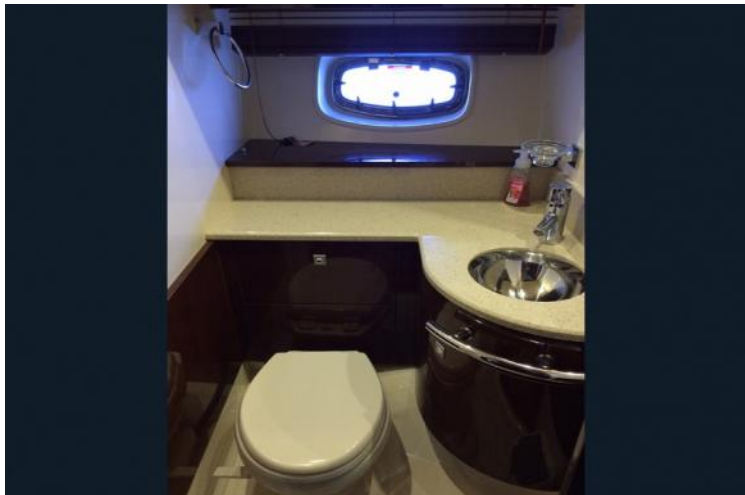
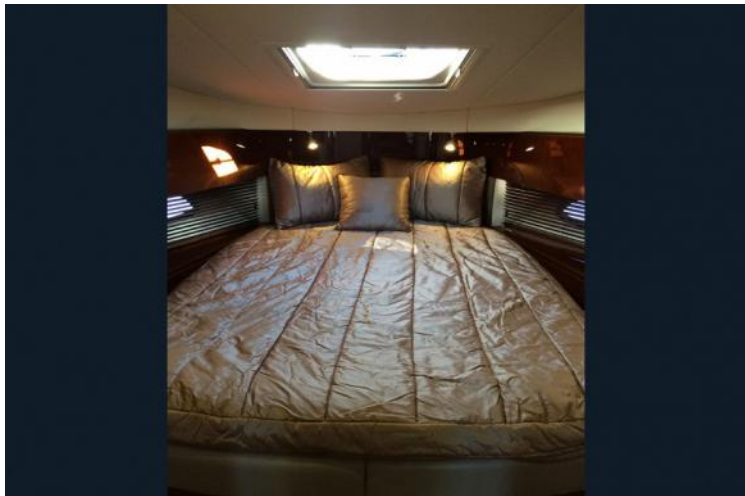
- Large open plan Saloon layout
 - Ray Marine E120 Electronics Package
 - Extra Low Engine Hours 315
 - Twin Cummins Zeus Drive with Joy stick
 - Fully Air Conditioned
 - Hydraulic Swim platform
 - 11 KVA Cummins Onan Gen set
 - Aer Marine 3.2 RIB with 30 Hp Outboard
- | | |
|----------------|------------------|
| Construction: | GRP |
| Engine Type: | Cummins |
| Accommodation: | |
| Year: | 2010 |
| Price: | \$535,000 |

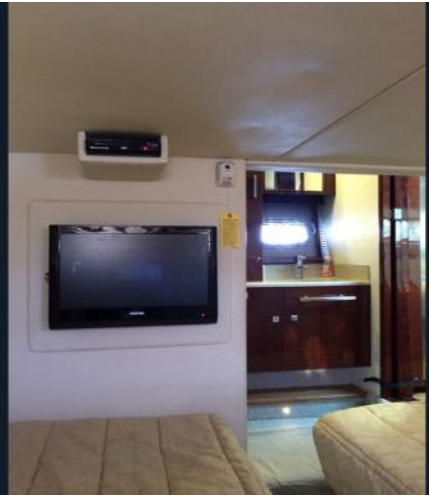
9997 1674

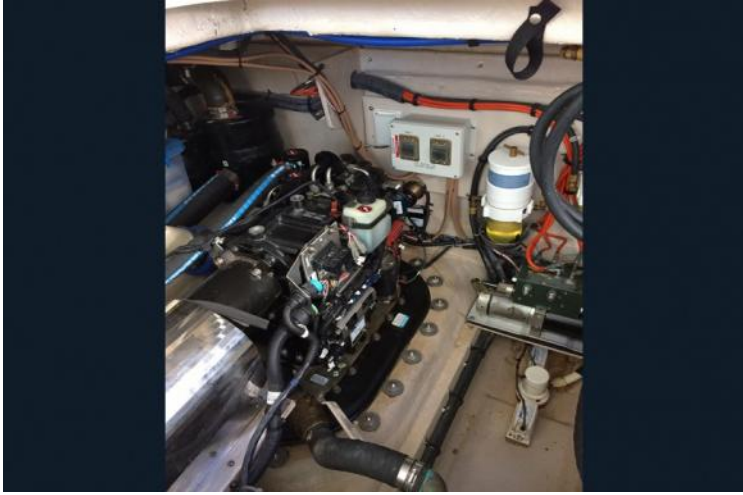
www.rowellmarine.com.au
sales@rowellmarine.com.au

1 Queens Parade, Newport









INVENTORY of Vessel: 47.2' Sea Ray Sundancer 470

General

Boat Brand:	Sea Ray	Year Built	2010
Length Lwl:	47'3	Draft	1.2 M
Hull Material:	GRP	Deck Material	GRP
Cockpit Location:	Upper Saloon Starboard side	Steering System	Hydraulic Power steering
Boat Type:	Sundancer 470	Builder	Sea Ray Boats
Length Loa:	47'3	Beam	14'
Displacement:	15.5 Tons	Hull Finish	White Gelcoat
Steered By:	Wheel/Autopilot	Keel Type	V to Semi V
Bottom Condition:	Good		

Engine Details

Brand:	Cummins	Model	QSB 6.7
Cooling:	Fresh water cooled via heat exchanger	Drive Type	Twin Diesel T - Zeus Drives with Joy stick control
Cruise Speed:	28 Kts.	Fuel Type	Diesel
Material:	Alloy welded	Bow Thruster	No
Cylinders:	6	Hp	480
Engine Hrs:	314	Max Speed	34 Kts.
Fuel Tank Size:	1325L	Stern Thruster	No

Anchoring

Primary:	Ultra 27 Kg stainless steel plow anchor	Anchor Winch	Quick High Performance with Helm and Deck Controles
Chain Warp:	8 mm Gal chain aprox 40 m chain		

Accommodation

Dining Table Capacity:	Galley, 4 person Saloon 6 - 8 Person	Double Bunks	1 x Master and 1 x V.I.P
Convertible Bunks:	Aft cabin, from 2 Singles to large double	Water Heating	Kuma 44 Litres Electric
Holding Tank:	Yes 159 L	Cabins	Double state room forward with seperate Head and Shower
Single Bunks:	2	Shower	2
Toilet:	2 Vacuflush		

Galley

Water Tank Size:	378 L Charcoal Filtered to all of vessel	Water Tank Material	Alloy Welded
Sinks Material:	Single stainless steel deep sink with Grohe Flick Mixer	Stove	Kenyon Euro Kera 2 Hob Electric in Galley. Upper Saloon , Kenyon Custom BBQ Grill
Gas Bottles:	No	Refrigeration	Isotherm 195 L Fridge and Freezer dual voltage in Galley. Isotherm Fridge in Saloon
Crokerycutlery:	Sparce	Sinks	1 in Galley and 1 in Saloon
Sink Taps:	Grohe Flick Mixer	Microwave	Electrolux 2300 W Convection Microwave
Gas Monitor:	Co2 Gas Monitors throughout vessel	Desalinator	No
Other:	Large volume cupboard and draw storage , Ducted Vacuum System,		

Electrical Equipment

Batteries:	3 X 12 V AGM and 2 x 12 V Lead acid	Generator	Cummins onan 11 Kva 728 Hrs.
Inverter:	Xantrex 2000 watt	Shore Power	Yes 240 V x 2 Inputs
Charging:	2 X 12 v 60 Amp	Solar Panels	No
Power Monitor:	Yes	Navigation Lights	Yes

Electronics & Instrumentation

Ele Radios:	Raymarine VHF	Speed Log	Raymarine E 120 Hybrid touch screen
Ele Wind:	No	Ele Gps	Raymarine , Secondary Garmin GPS Map 78 sc
Ele Radar:	Raymarine Hybrid touch 72 Mile	Ele Television	3, Hisense, Toshiba plus DVD
Ele Horn:	Yes	Other Electronics	Cobham Remote spotlight Electronic
Ele Compass:	Yes	Depth Sounder	Raymarine E 120 Hybrid touch screen
Auto Pilot:	Precision Pilot , Mercury	Ele Plotter	Raymarine E 120 Hybrid touch screen
Sound System:	Sony Marine rmx60m	Ele Video	Teac DV 2288
Ele Barometer:	No		

Safety Equipment

Life Jackets:	Yes	Life Rafts	No
Vsheet:	No	Epirb	GME 406G H 503F
Bilge Pumps:	3 in Engine Room	Life Buoys	No
Harnesses:	No	Fire Extinguishers	Automatic Sea Fire plus Manual

Docking Equipment

Boat Hooks:	Yes	Fenders	3
Deckwash Pump:	Yes	Cockpit Table	Yes sits 6 people
Docking Lines:	Yes	Hoses	Aft shower
Boarding Ladder:	Yes		

Tender Equipment

Dinghy:	GRP RIB AER MARINE 3.2 M Console steering	Davits	No, Hydraulic Lift platform
Sun Awning:	Yes	Emergency Tiller	No
Outboard:	30 HP E Tec Evinrude	Bimini	No
Boom Tent:	No	Lazy Jacks	N/A
Other:	Full Tender cover		

Vessel details are supplied by the vendor. Whilst all care is taken in presenting the information accurately, the Broker accepts no responsibility for the information supplied. No warranty is expressed or implied. The Broker acts as the vendor's agent only.